

ERD SERIES

10x10 SIZE SEALED CONSTRUCTION ROTARY TYPE



ERD
1xxxx (Flat Type)



ERD
2xxxx (Shaft Type)



ERD
4XXXX (Flat Type)



ERD
5xxxx (Shaft Type)

FEATURES

- Molded-in terminals and fully sealed construction.
- Standard 2.54mm pin spacing.
- All plastics UL 94V-0 grade fire retardant.
- Reliable contact and long-term stability.
- Binary decimal (8 or 10 positions) and hexadecimal (16 positions), real and complementary codes available.
- Pin-out compatible with most of current equivalents.
- Gold plated contacts to ensure low contact resistance.

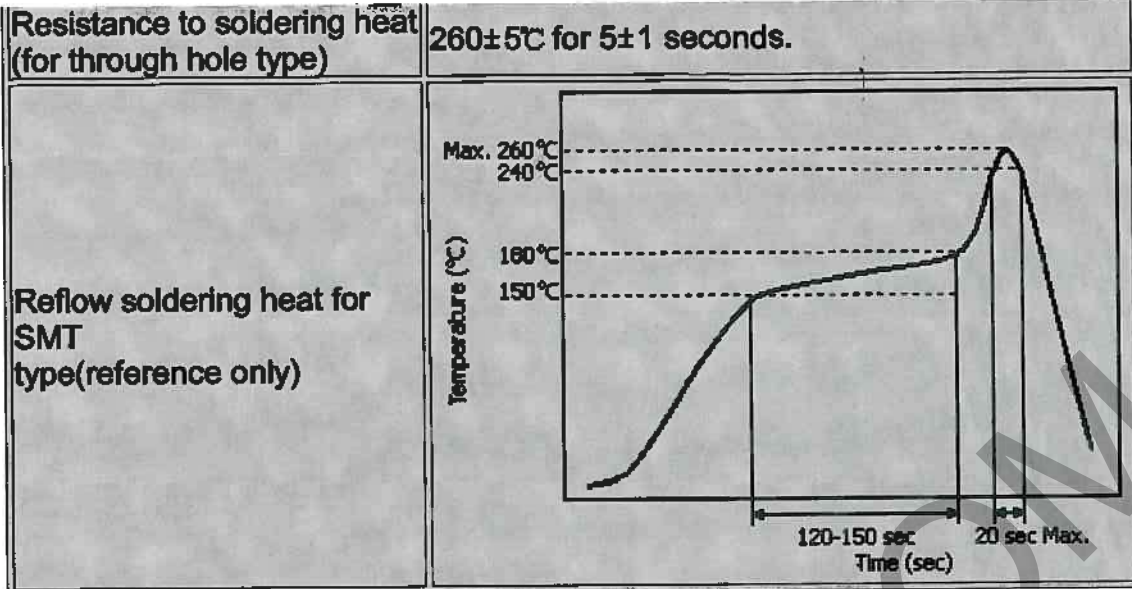
SPECIFICATIONS

1. ELECTRICAL

Contact rating	
switching	25 mA, 24 VDC
non-switching	100 mA
Contact resistance	100 mΩ Max.
Insulation resistance	1000 MΩ Min. at 100 VDC
Dielectric strength	250 VAC Min. for 60 seconds

2. MECHANICAL

Temperature Rating	
operating	-25°C to +70°C
storage	-40°C to +85°C
Operation force	500 gf-cm Max.
Mechanical life	2000 steps per position
Vibration	10Hz-50Hz-10Hz for 6Hrs.
Solderability (for through hole type)	after flux 230±5°C for 5±0.5 seconds, 95% coverage



PART NUMBERING SYSTEM

ERD 1 10 R S X

- +--- Blank: Standard
Z: RoHS Compliant
- +--- Setting:
S: Standard Type (Top Adjust Type)
R: Right Angle Type with Rows Spacing
2.54mm Side Adjust Type)
F: Right Angle Type with Rows Spacing
5.08mm (Side Adjust Type)
M: Surface Mounting Type with
Top Tape Sealed
D: Surface Mounting Type with
Top Tape Sealed in Tape & Reel Package
- +--- Code: R: Real
C: Complement
- +--- Number of positions: 08, 10, 16
- +--- Rotor: 1: Flat Type (pin out 3:3)
2: Shaft Type (pin out 3:3)
4: Flat Type (pin out 1:4)
5: Shaft Type (pin out 1:4)
- +--- Series name: ERD: Rotary Type Sealed Construction

CODE

PIN NO.
POSITION

0
1
2
3
4
5
6
7
8
9
A
B
C
D
E
F
1



2



Real Code
Rotor color: White (3:3), Yellow (1:4)



Complement Code
Rotor color: Red (3:3), Orange (1:4)



4

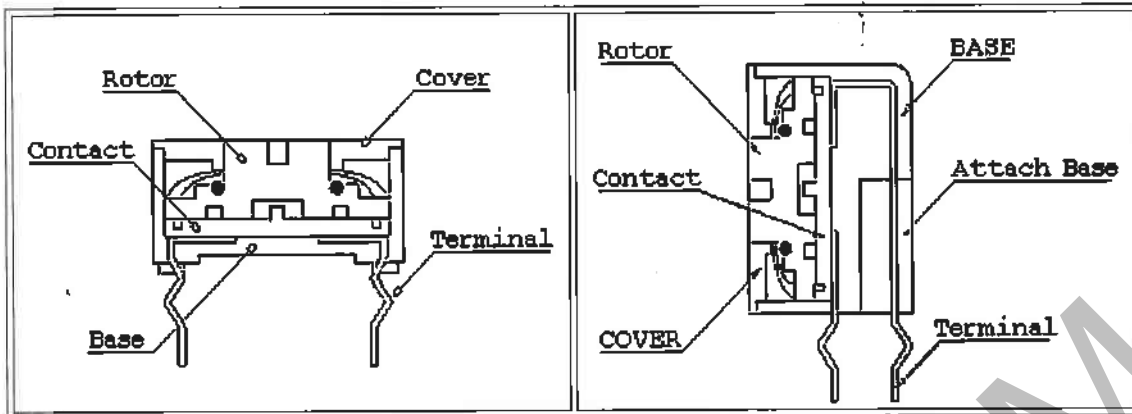




8

ELUMILED.COM

CONSTRUCTION



OPTIONS

1. Special marking available upon request.

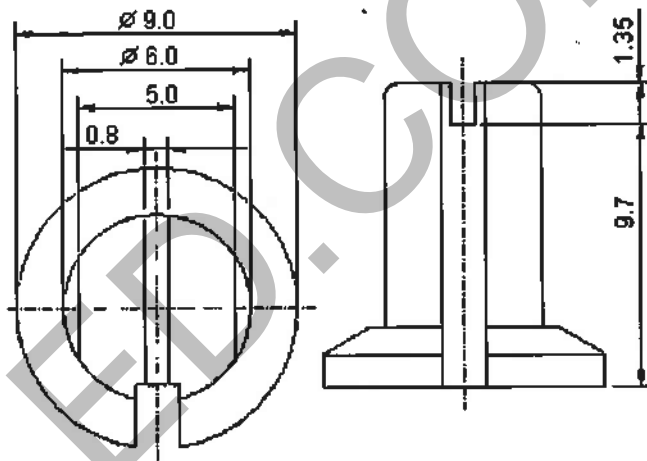
2. Shaft Cover.

418-80100(White 3:3)

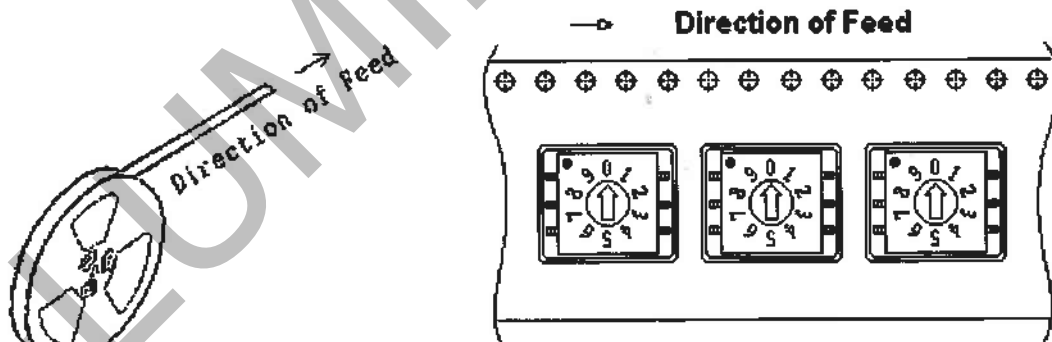
418-80200(Red 3:3)

418-80300(Yellow 1:4)

418-80400(Orange 1:4)



3. Tape & Reel Packaging (Per EIA STANDARD):



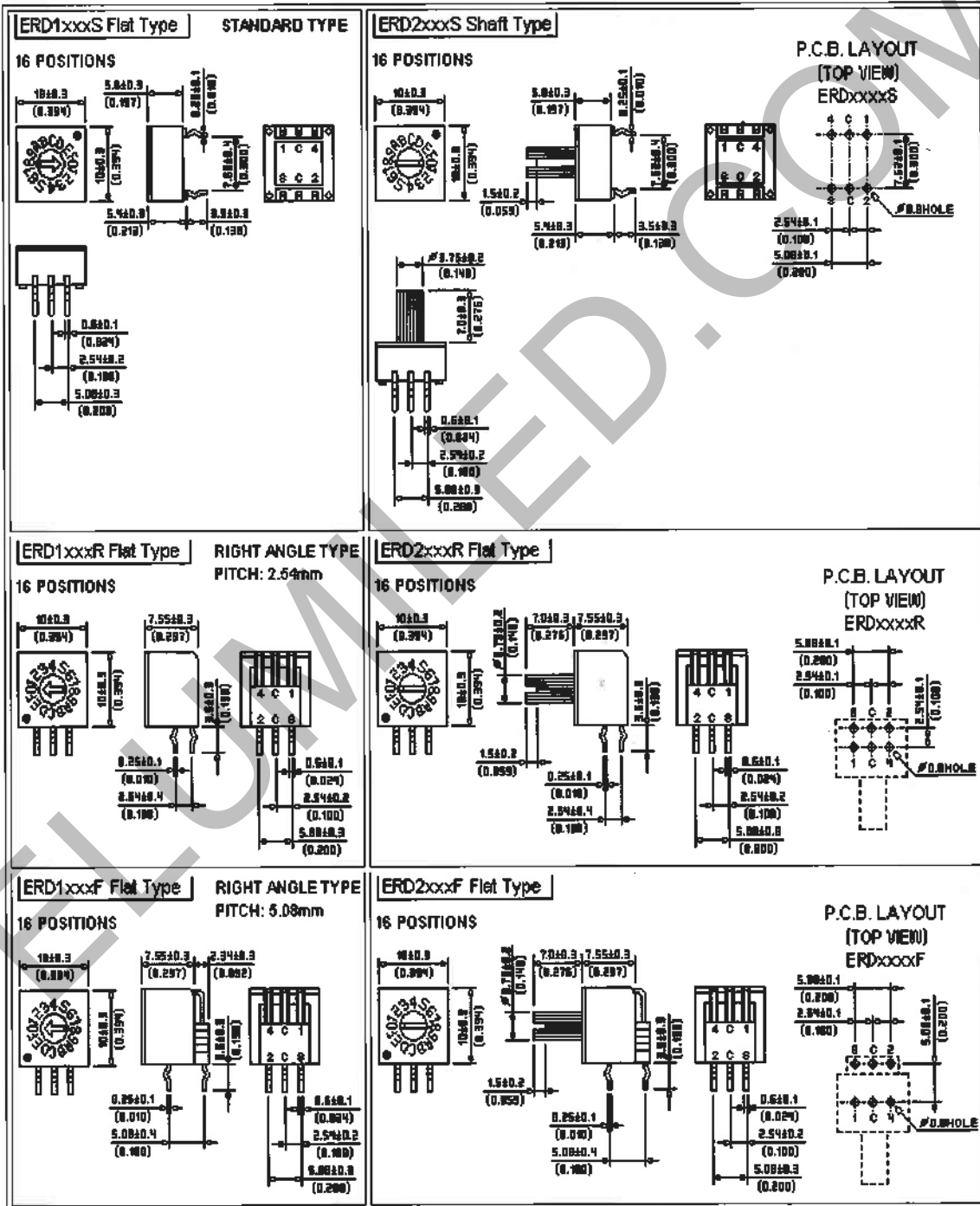
Each Reel contains 700pcs switches with a 390mm minimum leader and a 160mm minimum trailer

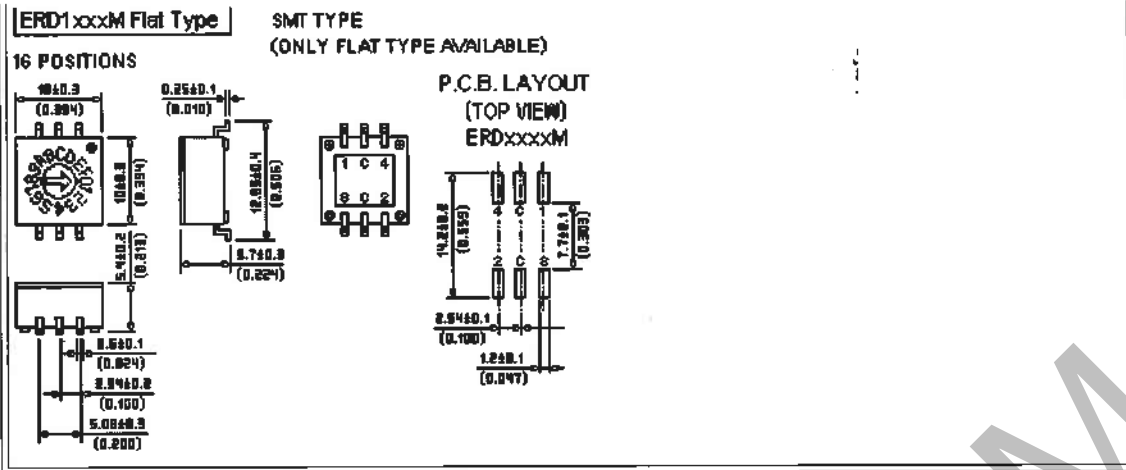
INTRODUCTION to ECE ROTARY DIP SWITCH

SIZE	POSITION S	CODE	PIN OUT	ROTOR	TYPE	PART NUMBER
------	------------	------	---------	-------	------	-------------

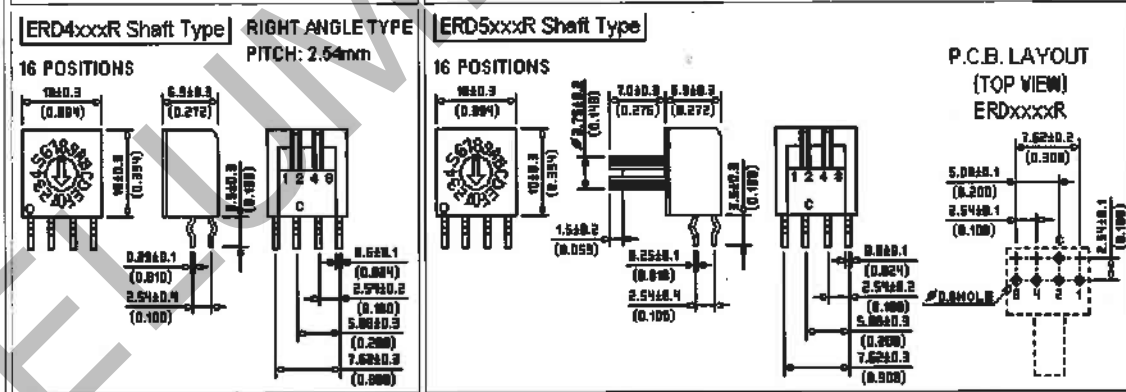
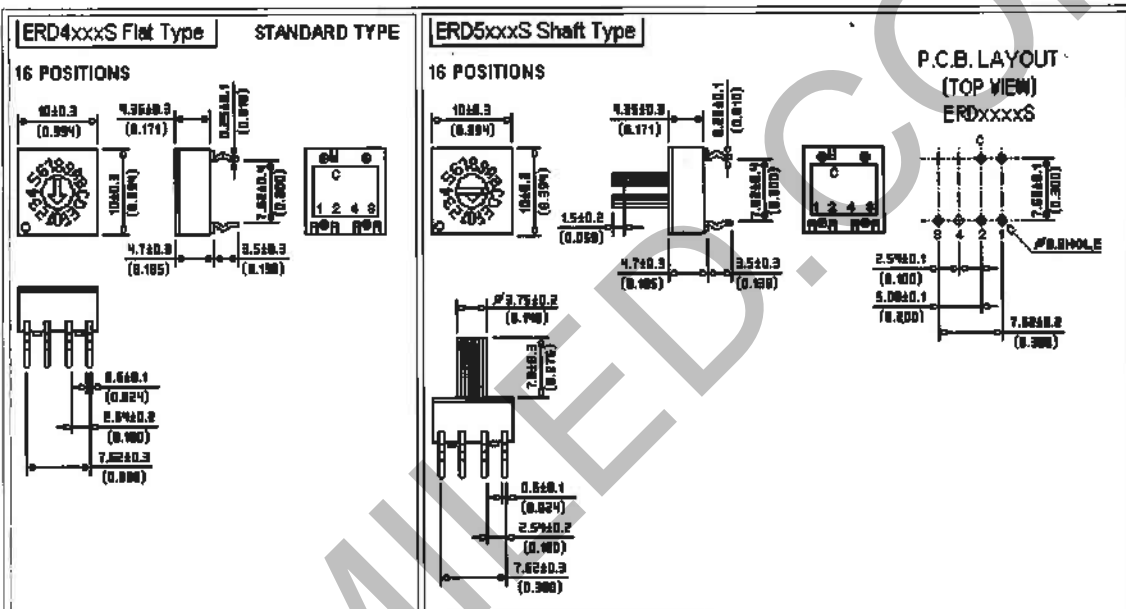
10x1 0	8,10,16	REAL, COMPLEMEN T	3:3	FLAT, SHAFT	STANDARD	ERD1xxxS, ERD2xxxS
				FLAT, SHAFT	RIGHT ANGLE	ERD1xxxR/F, ERD2xxxR/F
				FLAT	SMT	ERD1xxxM
			1:4	FLAT, SHAFT	SMT IN T&R	ERD1xxxD
				FLAT, SHAFT	STANDARD	ERD4xxxS, ERD5xxxS
				FLAT, SHAFT	RIGHT ANGLE	ERD4xxxR/F, ERD5xxxR/F
			FLAT	SMT	ERD4xxxM	
			FLAT	SMT IN T&R	ERD4xxxD	

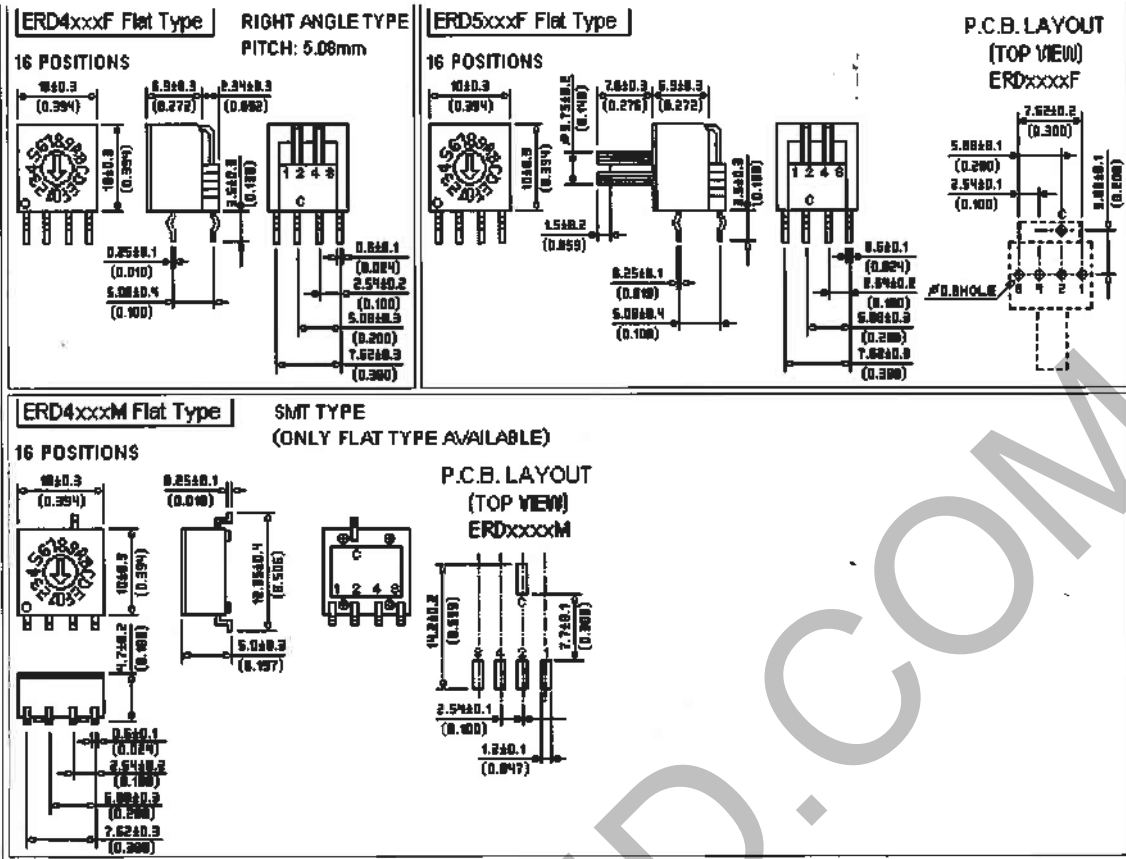
DIMENSIONS AND CIRCUITRY UNIT:mm(inch) PIN OUT 3:3





DIMENSIONS AND CIRCUITRY UNIT:mm(inch) PIN OUT 1:4





ELUMILED.COM